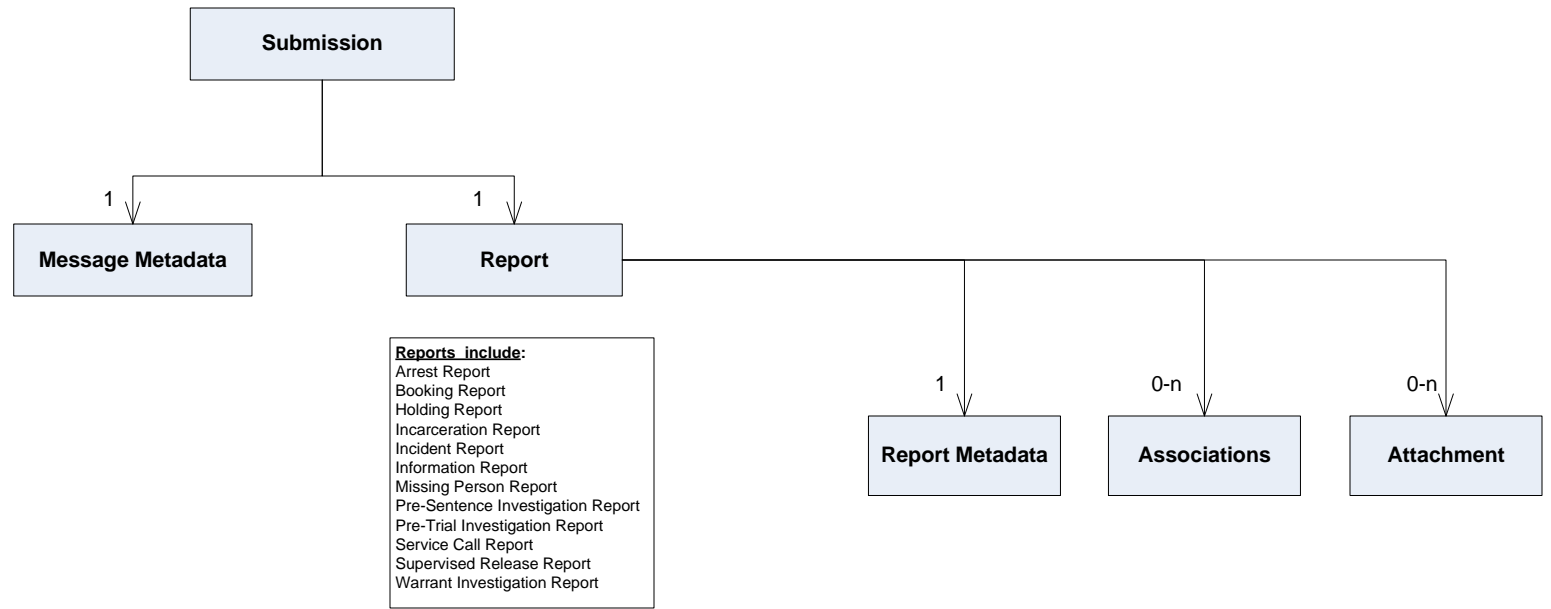


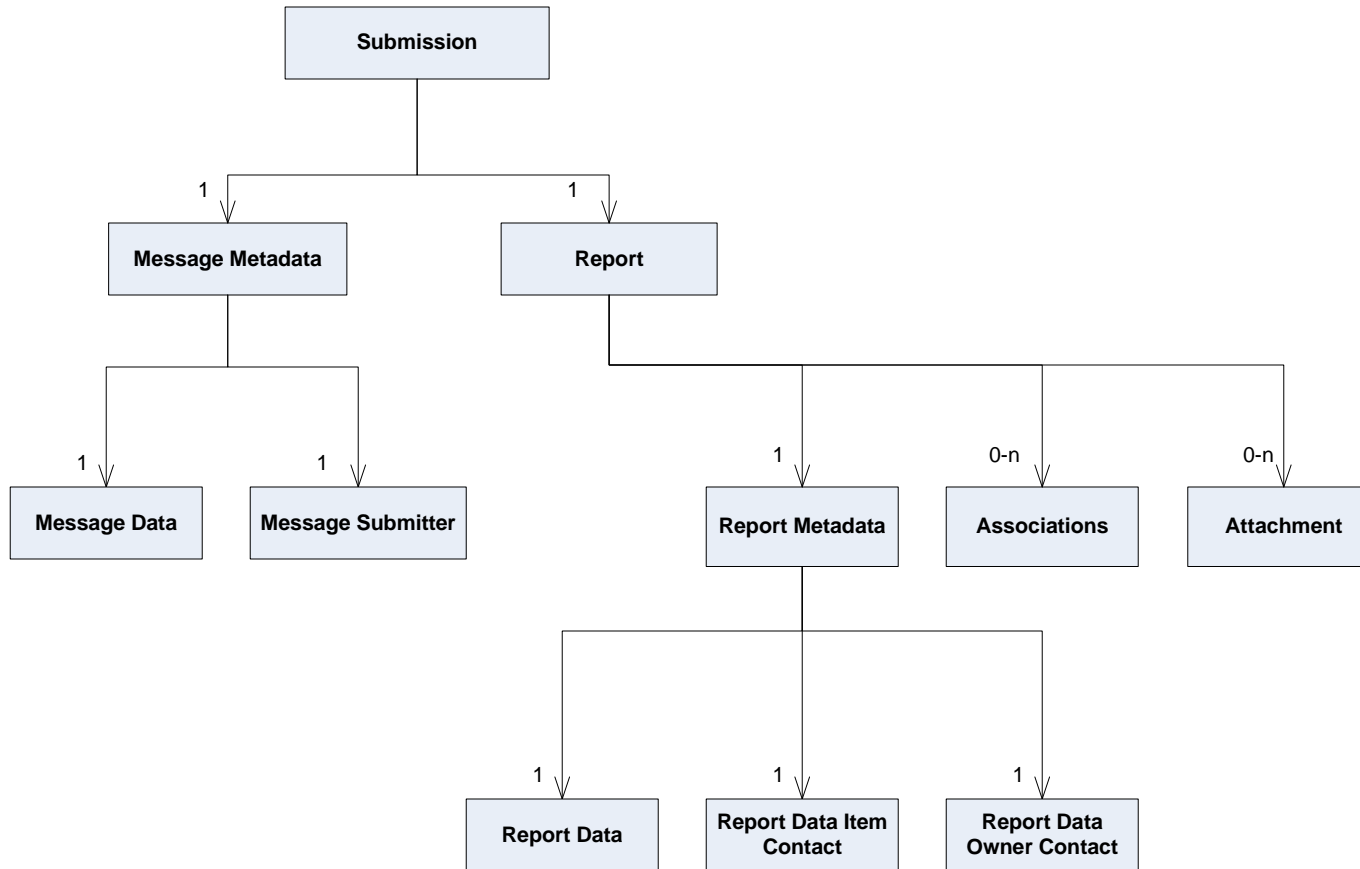
## N-DEx IEPD Message Overview



Legend:	
1	Required, must have one
1-n	One required but can have many
0-n	Can have zero – many
0-1	None required but can have up to one
*	Primary Activity for the Report Type

**Note:** High-level model diagrams do not show everything available or expected in an N-DEx submission. These diagrams provide an overview of all high-level objects directly linked to the primary activity (such as the Incident Activity for an Incident Report) plus any roles the high-level objects may serve (such as Person serving as a Missing Person). For further details and information, refer to the N-DEx\_4.1\_CMW document in the IEPD.

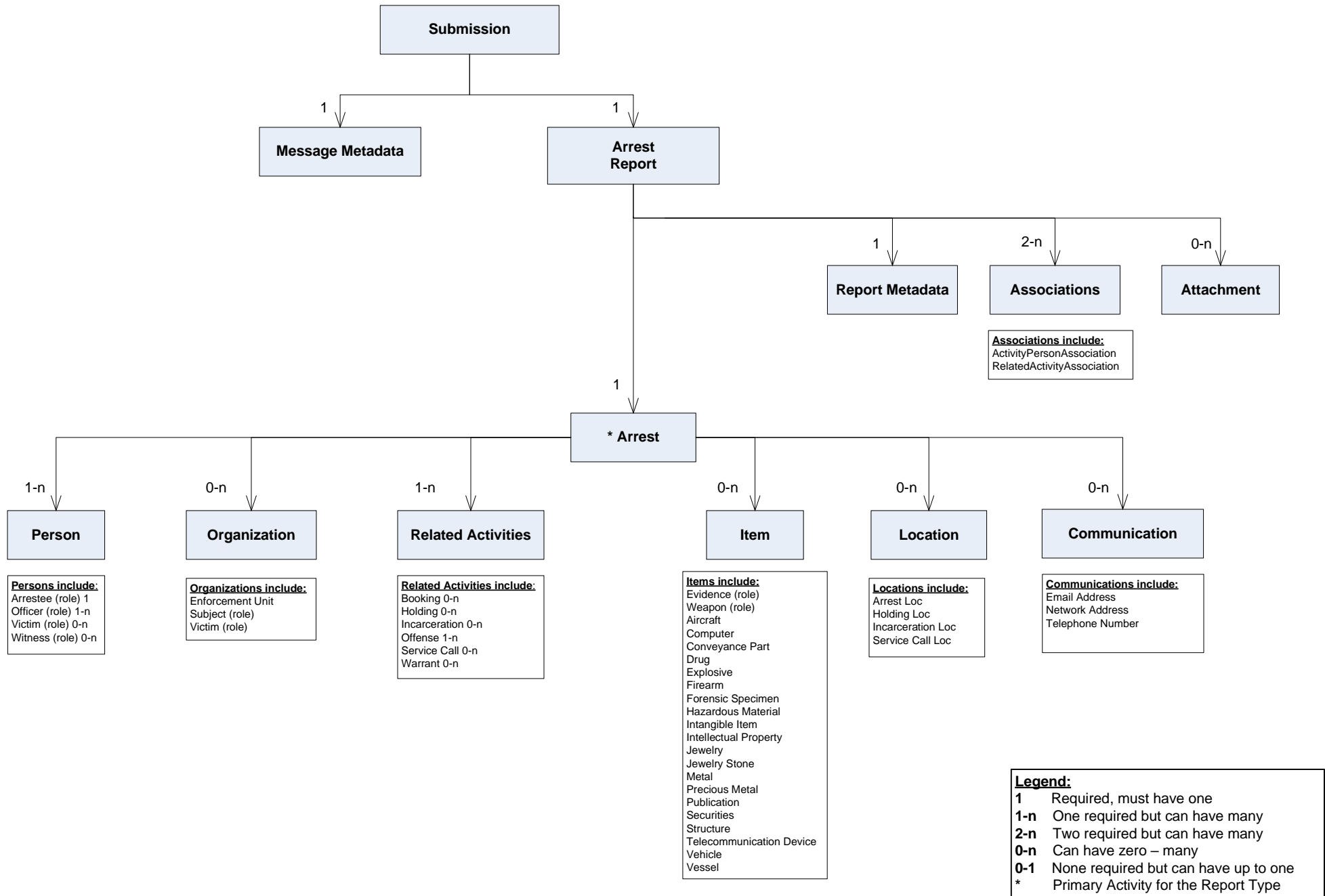
## N-DEx IEPD Metadata



Legend:	
<b>1</b>	Required, must have one
<b>1-n</b>	One required but can have many
<b>0-n</b>	Can have zero – many
<b>0-1</b>	None required but can have up to one
<b>*</b>	Primary Activity for the Report Type

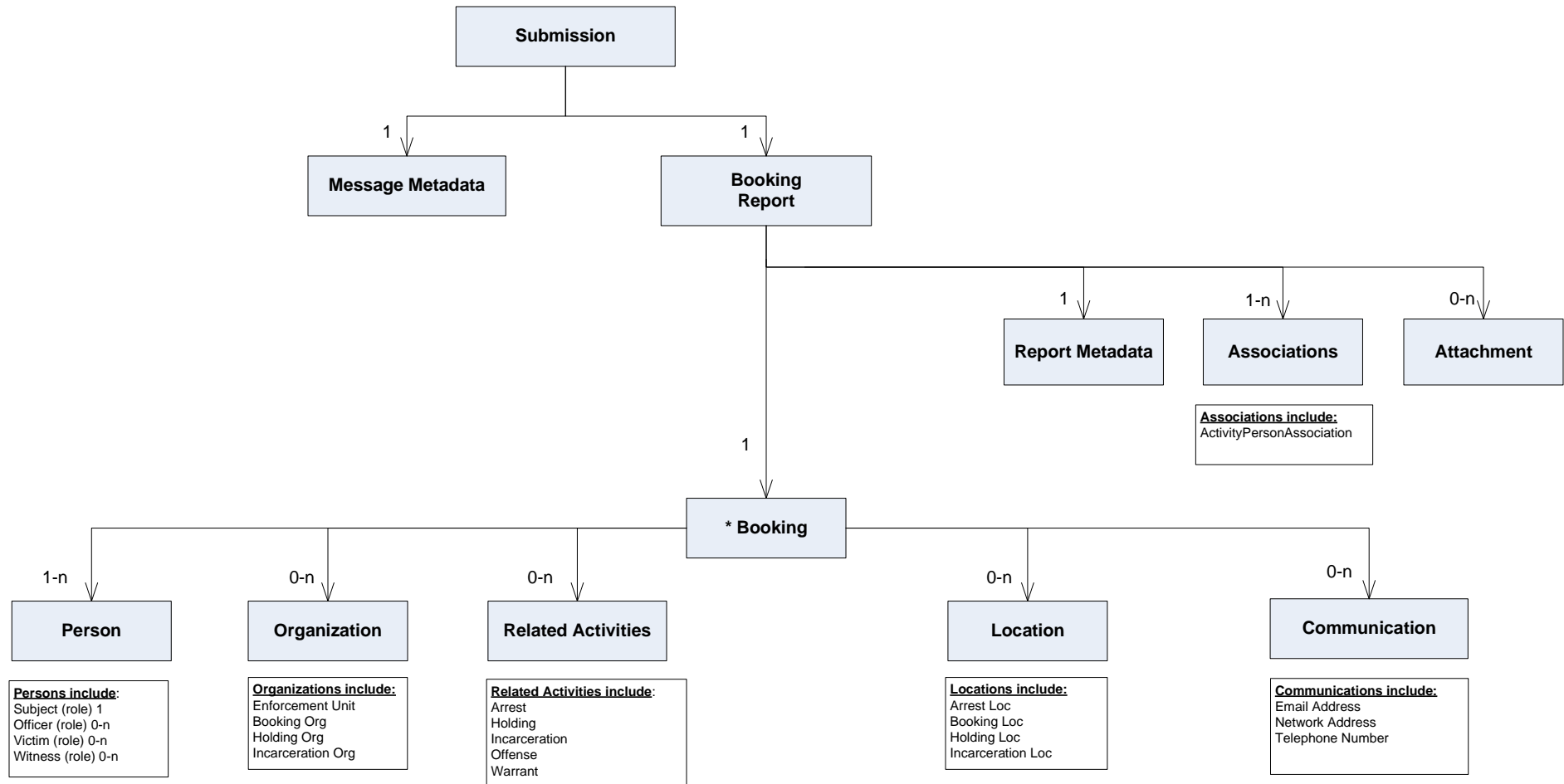
**Note:** High-level model diagrams do not show everything available or expected in an N-DEx submission. These diagrams provide an overview of all high-level objects directly linked to the primary activity (such as the Incident Activity for an Incident Report) plus any roles the high-level objects may serve (such as Person serving as a Missing Person). For further details and information, refer to the N-DEx\_4.1\_CMW document in the IEPD.

# N-DEx IEPD Arrest Report



**Note:** High-level model diagrams do not show everything available or expected in an N-DEx submission. These diagrams provide an overview of all high-level objects directly linked to the primary activity (such as the Incident Activity for an Incident Report) plus any roles the high-level objects may serve (such as Person serving as a Missing Person). For further details and information, refer to the N-DEx\_4.1\_CMW document in the IEPD.

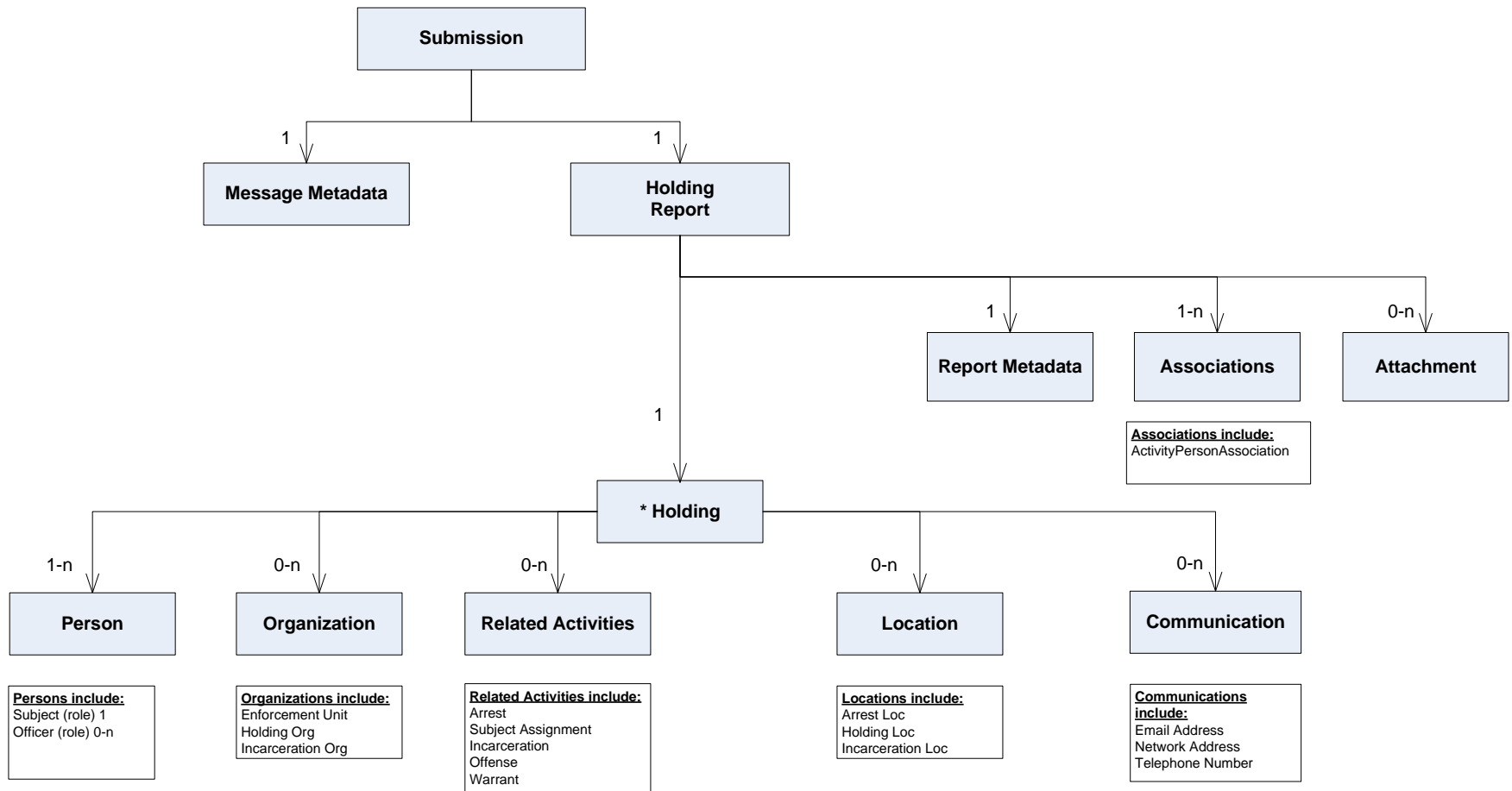
# N-DEx IEPD Booking Report



Legend:	
1	Required, must have one
1-n	One required but can have many
0-n	Can have zero – many
0-1	None required but can have up to one
*	Primary Activity for the Report Type

**Note:** High-level model diagrams do not show everything available or expected in an N-DEx submission. These diagrams provide an overview of all high-level objects directly linked to the primary activity (such as the Incident Activity for an Incident Report) plus any roles the high-level objects may serve (such as Person serving as a Missing Person). For further details and information, refer to the N-DEx\_4.1\_CMW document in the IEPD.

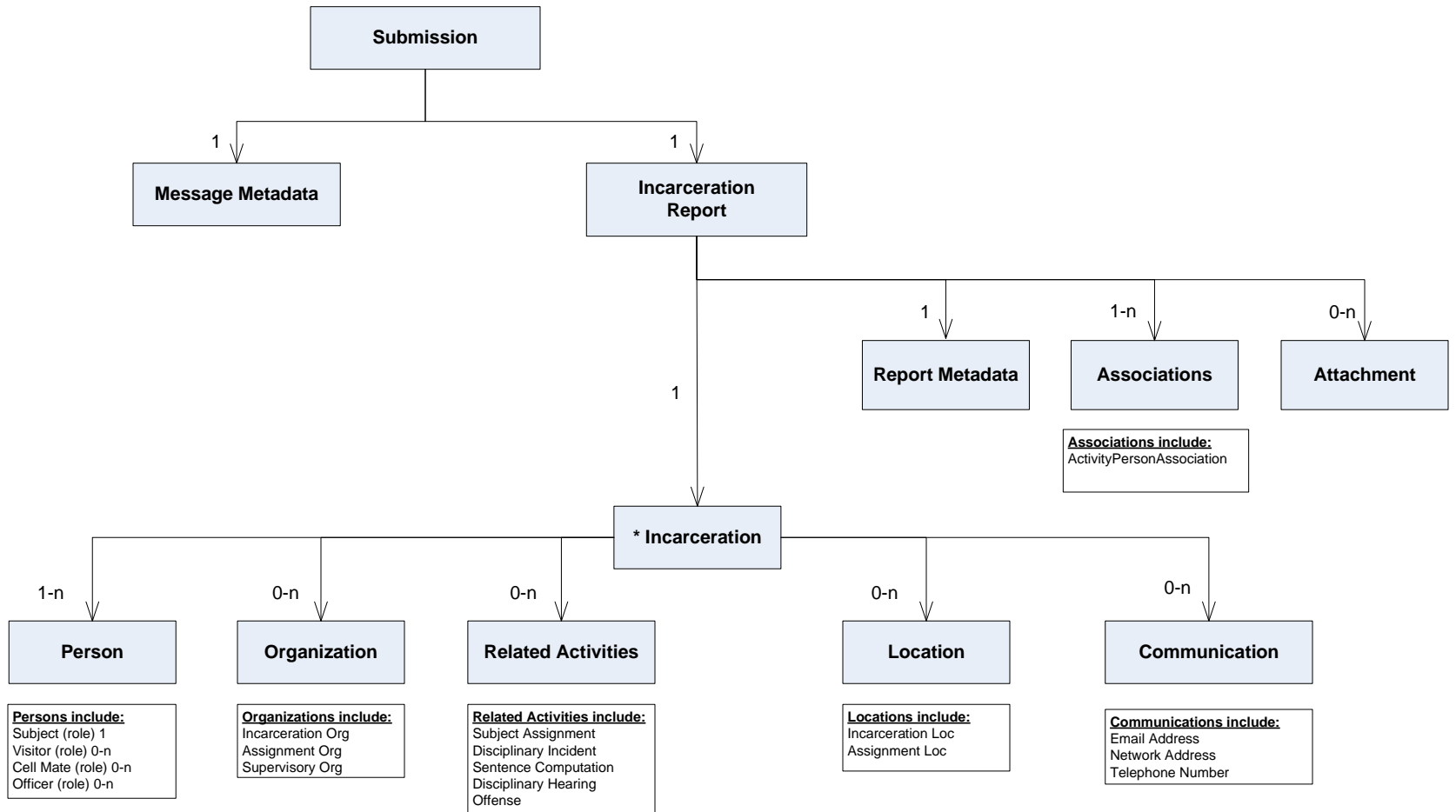
# N-DEx IEPD Holding Report



Legend:	
1	Required, must have one
1-n	One required but can have many
0-n	Can have zero – many
0-1	None required but can have up to one
*	Primary Activity for the Report Type

**Note:** High-level model diagrams do not show everything available or expected in an N-DEx submission. These diagrams provide an overview of all high-level objects directly linked to the primary activity (such as the Incident Activity for an Incident Report) plus any roles the high-level objects may serve (such as Person serving as a Missing Person). For further details and information, refer to the N-DEx\_4.1\_CMW document in the IEPD.

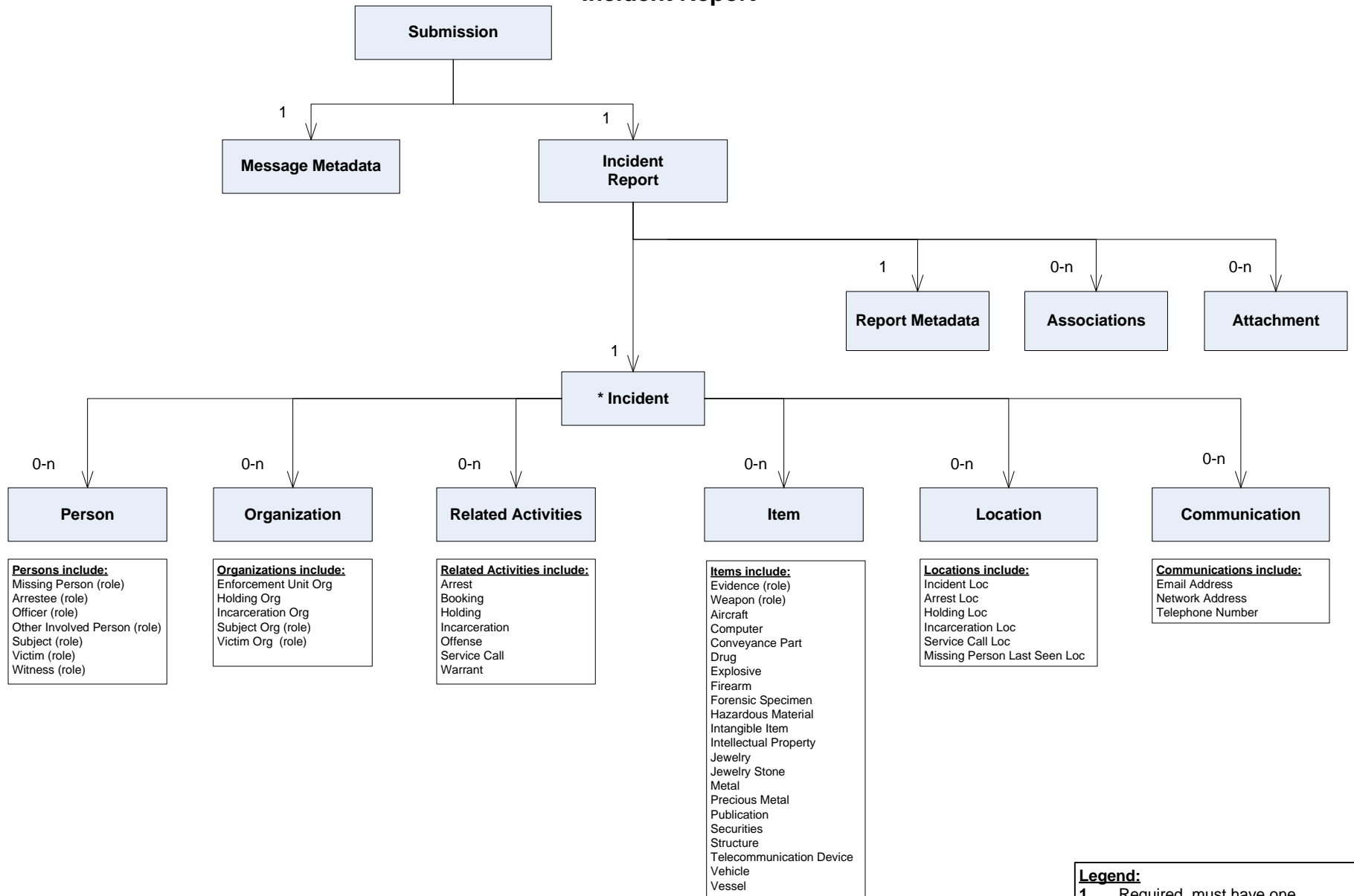
# N-DEx IEPD Incarceration Report



Legend:	
1	Required, must have one
1-n	One required but can have many
0-n	Can have zero – many
0-1	None required but can have up to one
*	Primary Activity for the Report Type

**Note:** High-level model diagrams do not show everything available or expected in an N-DEx submission. These diagrams provide an overview of all high-level objects directly linked to the primary activity (such as the Incident Activity for an Incident Report) plus any roles the high-level objects may serve (such as Person serving as a Missing Person). For further details and information, refer to the N-DEx\_4.1\_CMW document in the IEPD.

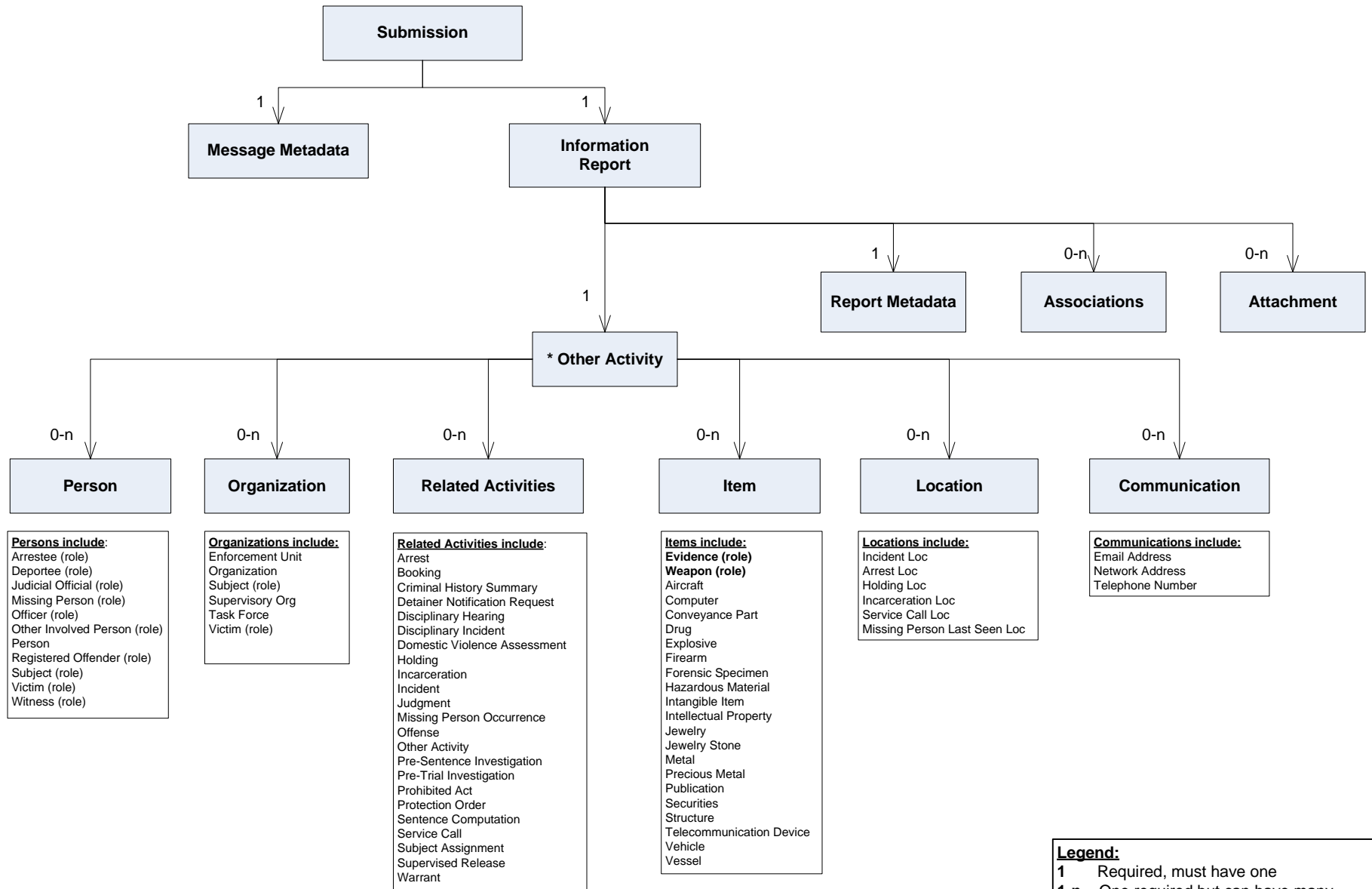
# N-DEx IEPD Incident Report



**Legend:**  
**1** Required, must have one  
**1-n** One required but can have many  
**0-n** Can have zero – many  
**0-1** None required but can have up to one  
**\*** Primary Activity for the Report Type

**Note:** High-level model diagrams do not show everything available or expected in an N-DEx submission. These diagrams provide an overview of all high-level objects directly linked to the primary activity (such as the Incident Activity for an Incident Report) plus any roles the high-level objects may serve (such as Person serving as a Missing Person). For further details and information, refer to the N-DEx\_4.1\_CMW document in the IEPD.

# N-DEx IEPD Information Report

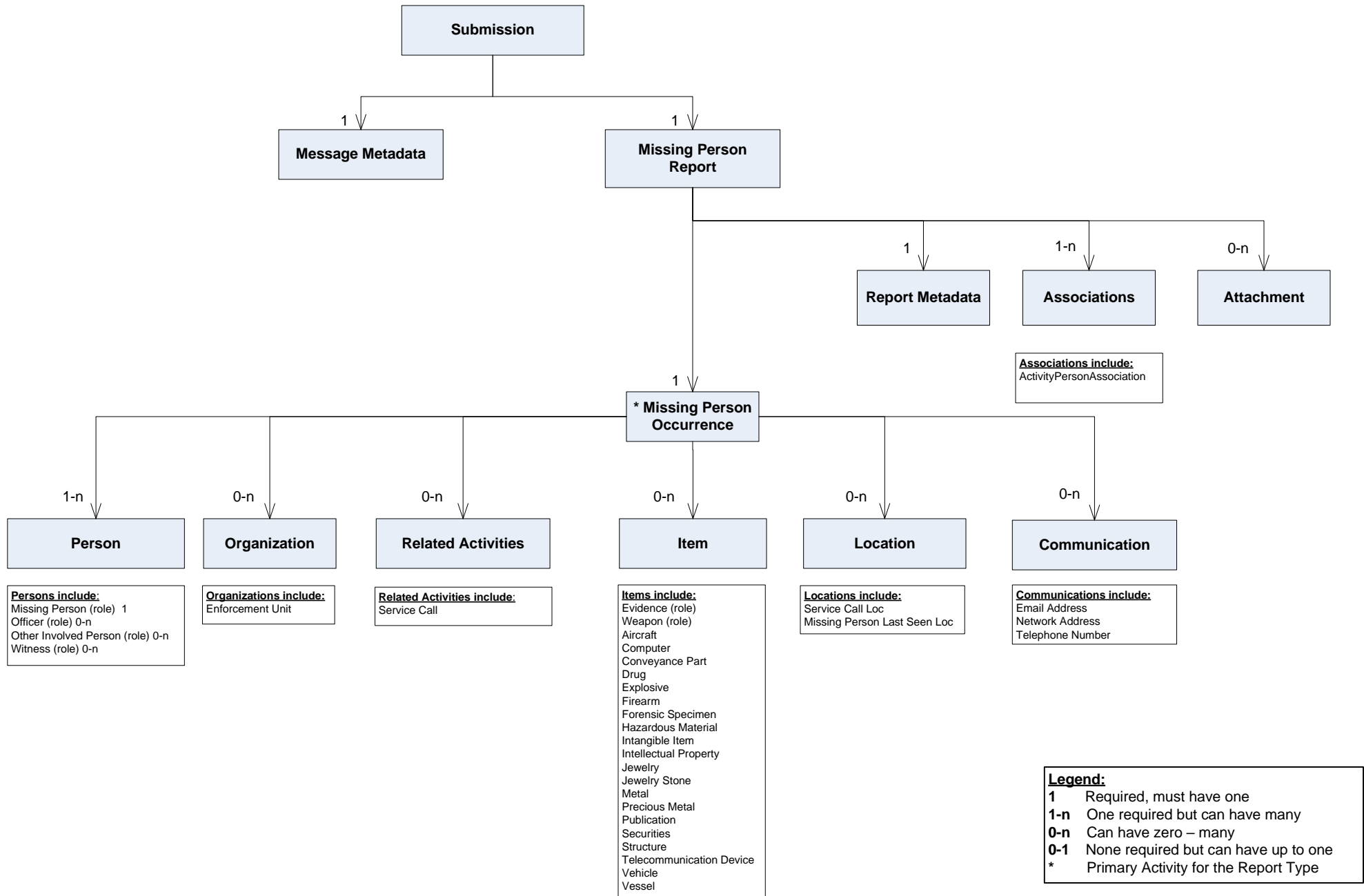


**Legend:**  
**1** Required, must have one  
**1-n** One required but can have many  
**0-n** Can have zero – many  
**0-1** None required but can have up to one  
**\*** Primary Activity for the Report Type

**Note:** High-level model diagrams do not show everything available or expected in an N-DEx submission. These diagrams provide an overview of all high-level objects directly linked to the primary activity (such as the Incident Activity for an Incident Report) plus any roles the high-level objects may serve (such as Person serving as a Missing Person). For further details and information, refer to the N-DEx\_4.1\_CMW document in the IEPD.

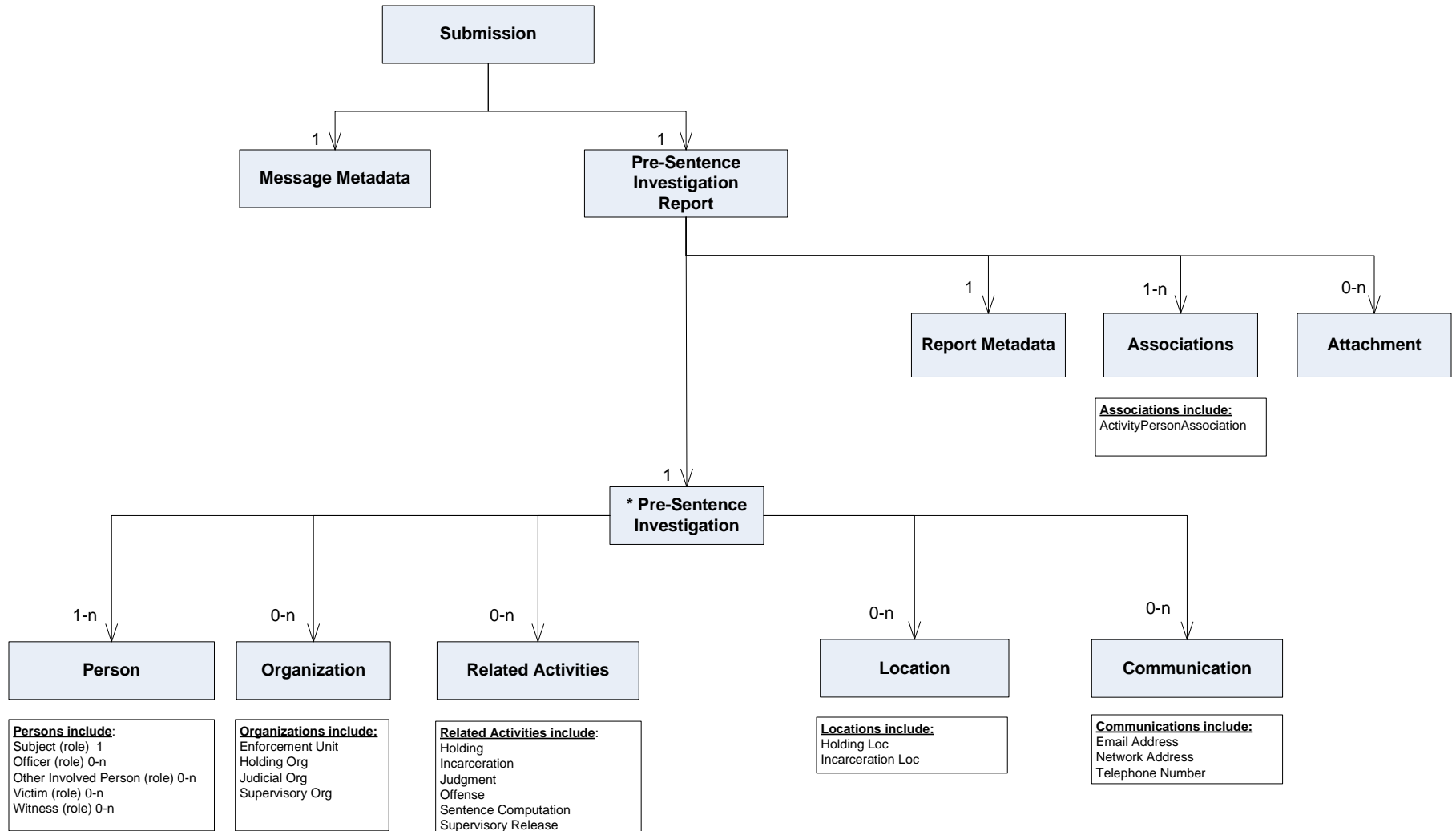


# N-DEx IEPD Missing Person Report



**Note:** High-level model diagrams do not show everything available or expected in an N-DEx submission. These diagrams provide an overview of all high-level objects directly linked to the primary activity (such as the Incident Activity for an Incident Report) plus any roles the high-level objects may serve (such as Person serving as a Missing Person). For further details and information, refer to the N-DEx\_4.1\_CMW document in the IEPD.

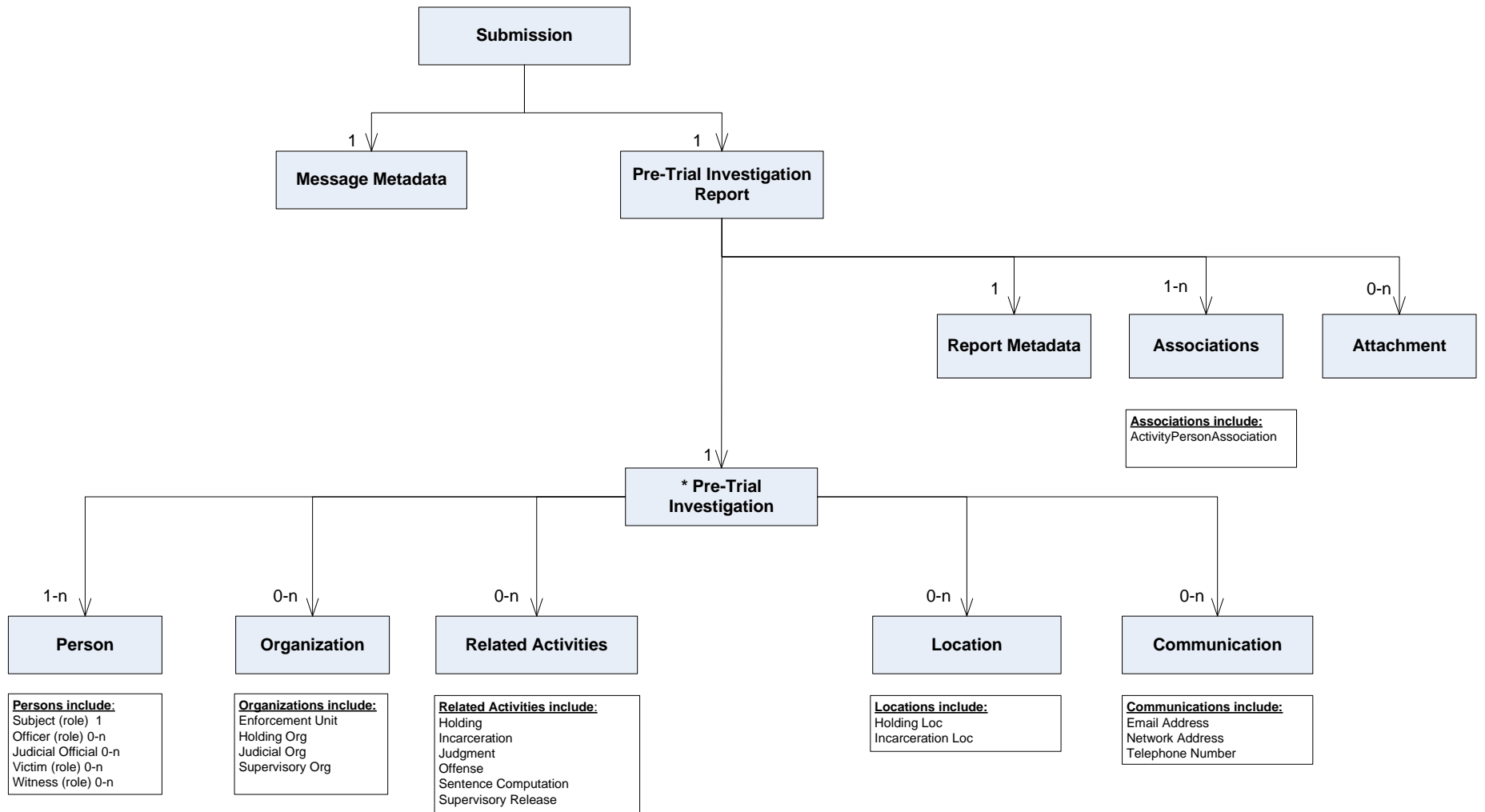
# N-DEx IEPD Pre-Sentence Investigation Report



Legend:	
<b>1</b>	Required, must have one
<b>1-n</b>	One required but can have many
<b>0-n</b>	Can have zero – many
<b>0-1</b>	None required but can have up to one
<b>*</b>	Primary Activity for the Report Type

**Note:** High-level model diagrams do not show everything available or expected in an N-DEx submission. These diagrams provide an overview of all high-level objects directly linked to the primary activity (such as the Incident Activity for an Incident Report) plus any roles the high-level objects may serve (such as Person serving as a Missing Person). For further details and information, refer to the N-DEx\_4.1\_CMW document in the IEPD.

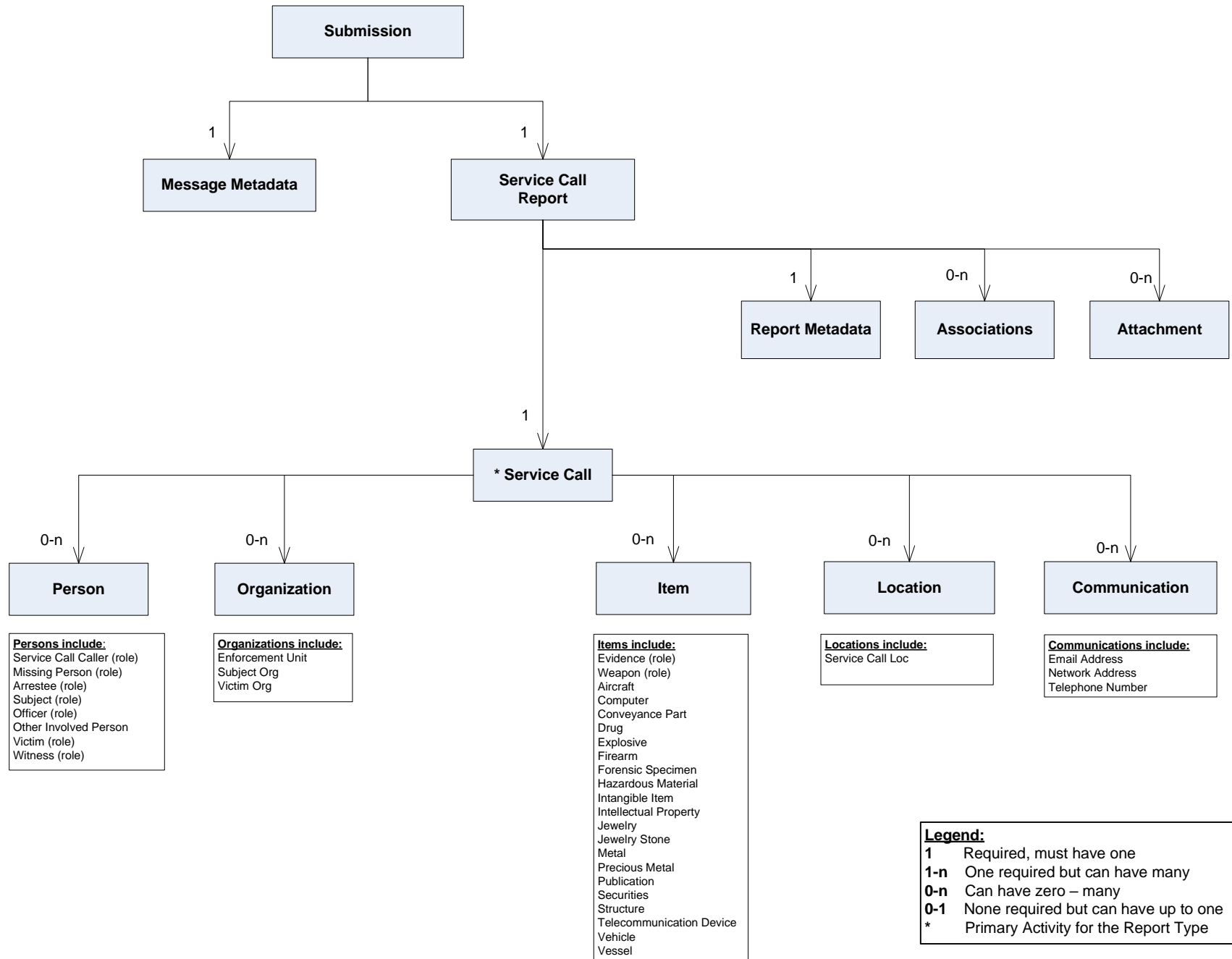
# N-DEx IEPD Pre-Trial Investigation Report



Legend:	
1	Required, must have one
1-n	One required but can have many
0-n	Can have zero – many
0-1	None required but can have up to one
*	Primary Activity for the Report Type

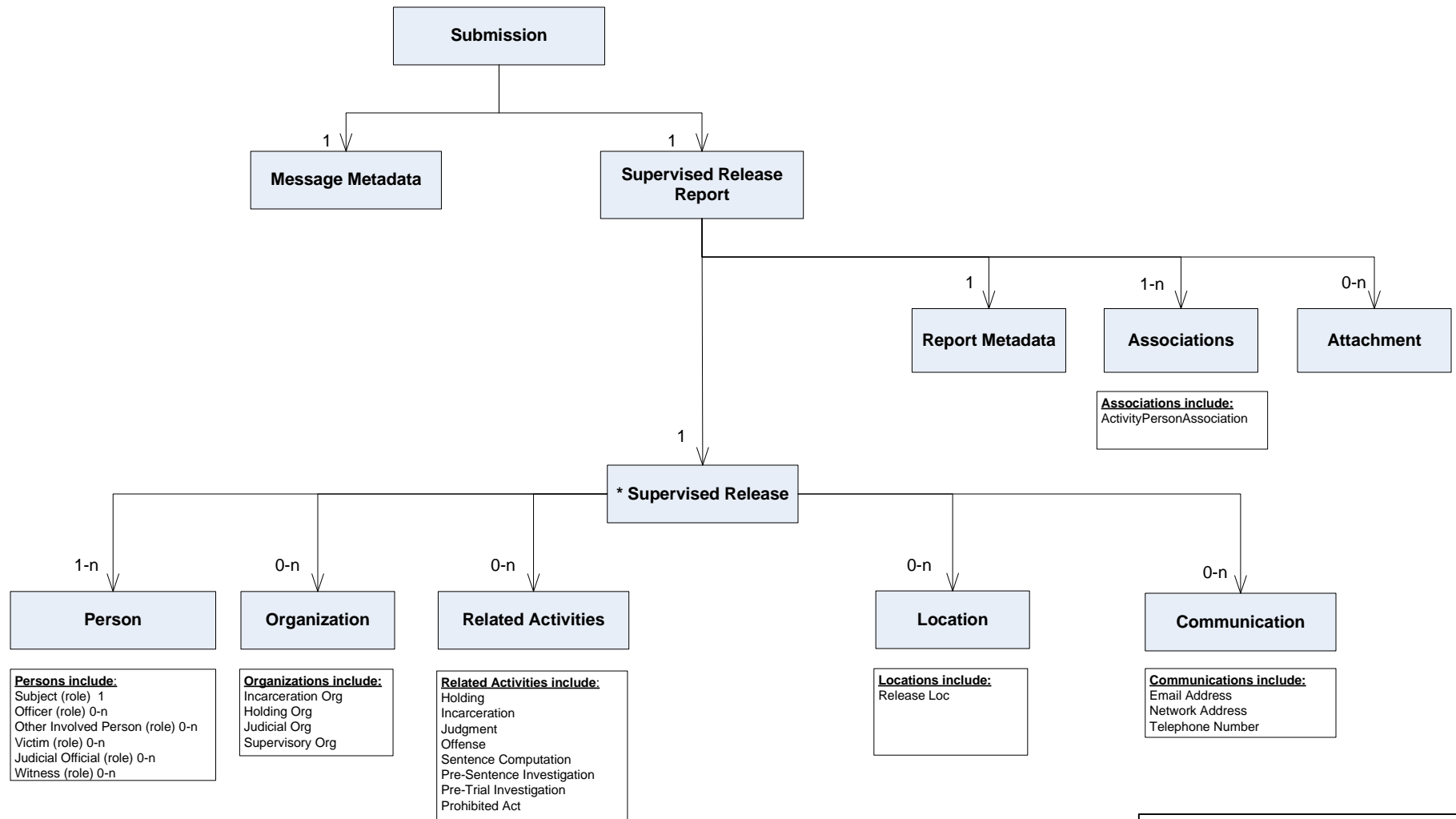
**Note:** High-level model diagrams do not show everything available or expected in an N-DEx submission. These diagrams provide an overview of all high-level objects directly linked to the primary activity (such as the Incident Activity for an Incident Report) plus any roles the high-level objects may serve (such as Person serving as a Missing Person). For further details and information, refer to the N-DEx\_4.1\_CMW document in the IEPD.

# N-DEx IEPD Service Call Report



**Note:** High-level model diagrams do not show everything available or expected in an N-DEx submission. These diagrams provide an overview of all high-level objects directly linked to the primary activity (such as the Incident Activity for an Incident Report) plus any roles the high-level objects may serve (such as Person serving as a Missing Person). For further details and information, refer to the N-DEx\_4.1\_CMW document in the IEPD.

# N-DEx IEPD Supervised Release Report

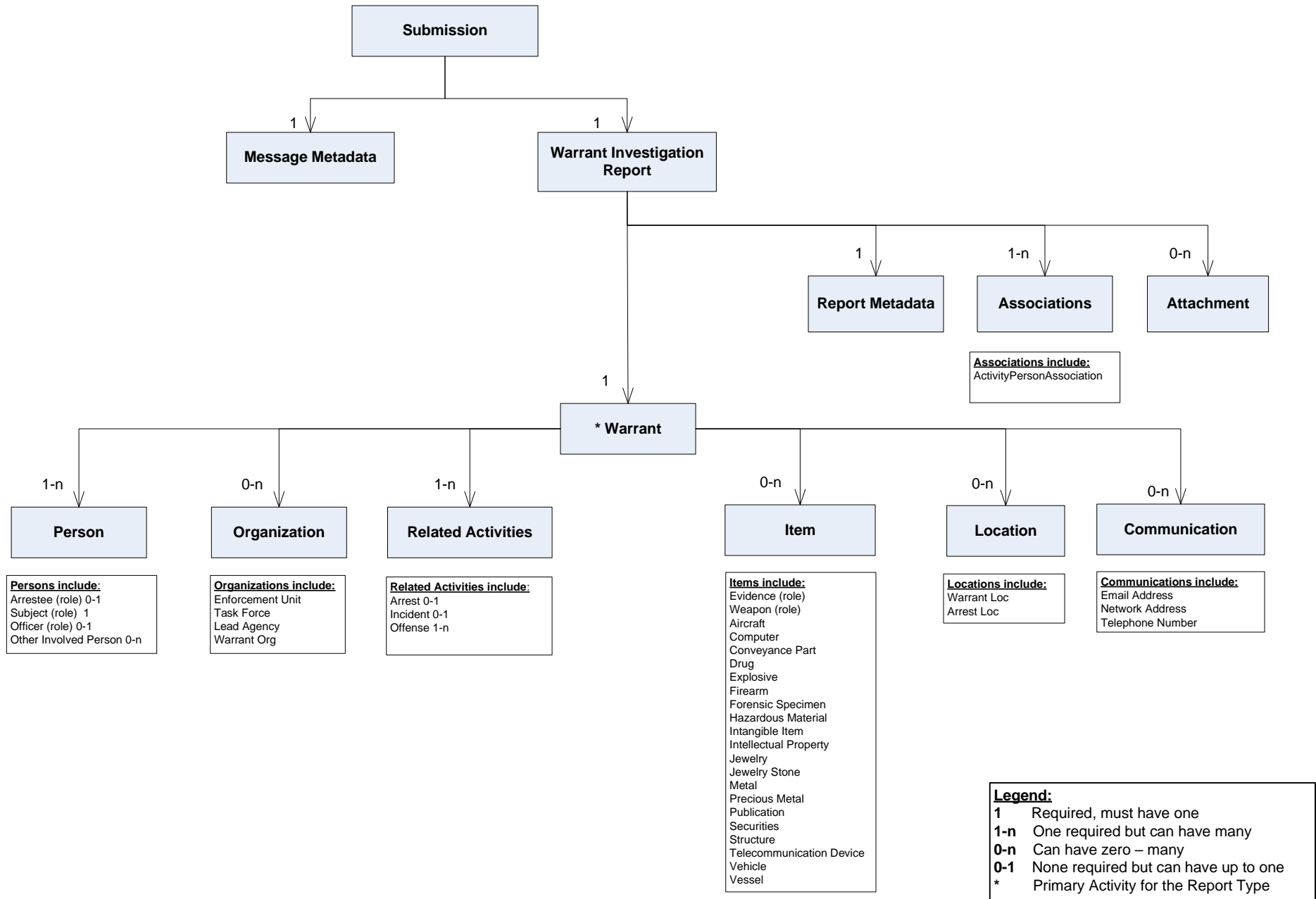


**Associations include:**  
 ActivityPersonAssociation

**Legend:**  
**1** Required, must have one  
**1-n** One required but can have many  
**0-n** Can have zero – many  
**0-1** None required but can have up to one  
**\*** Primary Activity for the Report Type

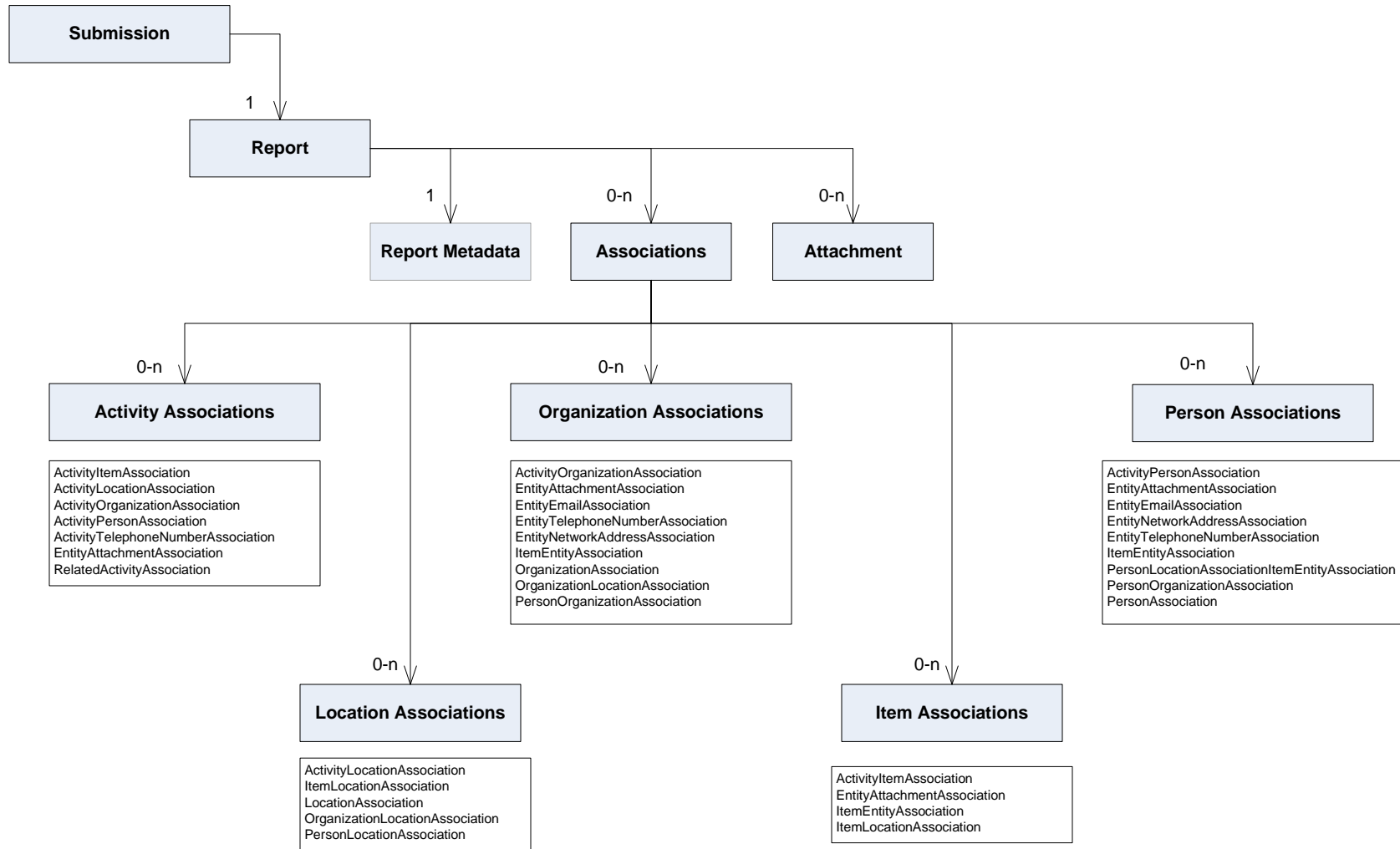
**Note:** High-level model diagrams do not show everything available or expected in an N-DEx submission. These diagrams provide an overview of all high-level objects directly linked to the primary activity (such as the Incident Activity for an Incident Report) plus any roles the high-level objects may serve (such as Person serving as a Missing Person). For further details and information, refer to the N-DEx\_4.1\_CMW document in the IEPD.

# N-DEx IEPD Warrant Investigation Report



**Note:** High-level model diagrams do not show everything available or expected in an N-DEx submission. These diagrams provide an overview of all high-level objects directly linked to the primary activity (such as the Incident Activity for an Incident Report) plus any roles the high-level objects may serve (such as Person serving as a Missing Person). For further details and information, refer to the N-DEx\_4.1\_CMW document in the IEPD.

# N-DEx IEPD Associations



## Legend:

- 1** Required, must have one
- 1-n** One required but can have many
- 0-n** Can have zero – many
- 0-1** None required but can have up to one
- \*** Primary Activity for the Report Type

**Note:** High-level model diagrams do not show everything available or expected in an N-DEx submission. These diagrams provide an overview of all high-level objects directly linked to the primary activity (such as the Incident Activity for an Incident Report) plus any roles the high-level objects may serve (such as Person serving as a Missing Person). For further details and information, refer to the N-DEx\_4.1\_CMW document in the IEPD.